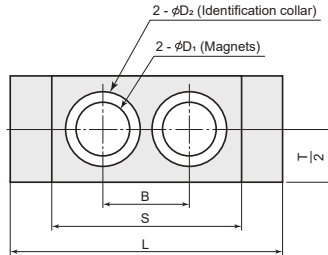
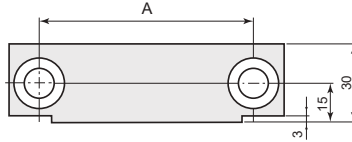


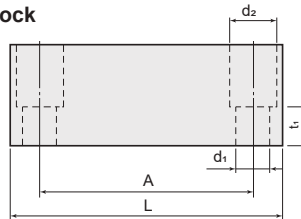
● MLK - Normal Type



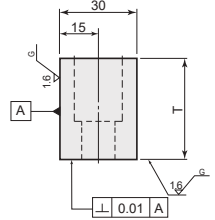
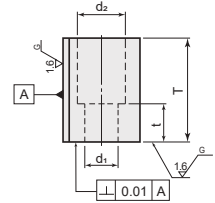
● Holder



● Block



M SS400 magnet MLK40-100 (Heat resistance: up to 80°C)  
MLK80-200 (Heat resistance: up to 200°C)



M SS400

● Normal Type

Part Number	Adhesion strength (per set under 20°C)	A	B	S	L	T	t	D <sub>1</sub>	D <sub>2</sub>	Identification collar	d <sub>1</sub>	d <sub>2</sub>	A
MLK 40	392.3N {40kgf}	63	25	60	80	25	12	18	22	Gold (Brass)	9	14	CB8-25 4pcs. Spring washers 4pcs
MLK 80	784.5N {80kgf}									Silver (Aluminum)			
MLK100	980.7N {100kgf}	100	39	79	126	40	15	30	34	Gold (Brass)	11	18	CB10-30 4pcs. Spring washers 4pcs
MLK200	1961.3N {200kgf}									Silver (Aluminum)			

⚠ Adhesion strength per set indicates the vertical force by which a holder and a block adhered each other can be separated.

● Features

- Is easier to install compared with other types of mold locking units.
- Requires little slowing down for mold closing. (making the molding cycle more efficient)



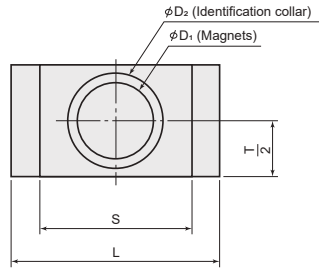
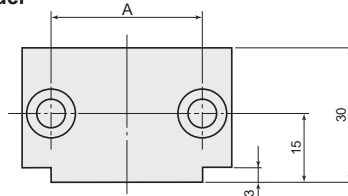
Order Example

Part Number
MLK100

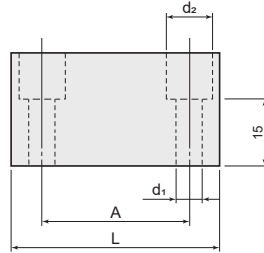
● MLKC - Compact Type



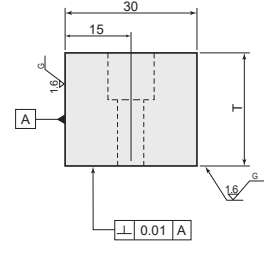
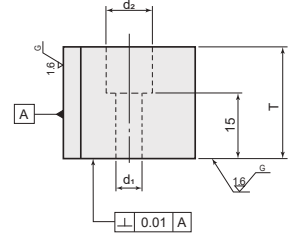
● Holder



● Block



M SS400 magnet MLKC20-50 (Heat resistance: up to 80°C)  
MLKC40-100 (Heat resistance: up to 200°C)



● Compact Type

M SS400

Part Number	Adhesion strength (per set under 20°C)	A	S	L	T	D <sub>1</sub>	D <sub>2</sub>	Identification collar	d <sub>1</sub>	d <sub>2</sub>	A
MLKC 20	196.1N {20kgf}	36	36	50	25	17.5	22	Gold (Brass)	6.6	11	CB6-25 4pcs. Spring washers 4pcs
MLKC 40	392.2N {40kgf}							Silver (Aluminum)			
MLKC 50	490.3N {50kgf}	52	52	70	40	29.5	34	Gold (Brass)	9	14	CB8-30 4pcs. Spring washers 4pcs
MLKC100	980.6N {100kgf}							Silver (Aluminum)			

⚠ Adhesion strength per set indicates the vertical force by which a holder and a block adhered each other can be separated.

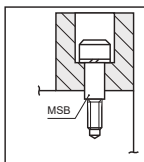
- Features
- MLKC40-100 is about 50%~60% smaller than normal type (MLK).
  - Is easier to install compared with other types of mold locking units.
  - Requires little slowing down for mold closing. (making the molding cycle more efficient)



Order Example

Part Number  
MLKC100

● How to Mount



- Install the magnet lock sets with the mold closed. Place them onto the mold's center, and fasten with the supplied bolts.
- Install them so that the magnetic face is in parallel to the parting line.
- Finish the plate surfaces so that the lock's magnets tightly couple together.
- Use MSB Shoulder Bolts if bolt breakage is anticipated. To use a MSB Shoulder Bolt, make sure to create a counterbore on the plate. Finish the counterbore into H7 or so.

● Example

