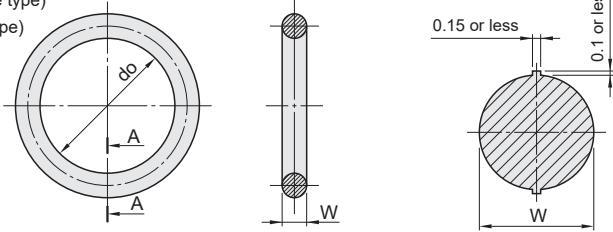


ORS (Space saving, static type)
ORP (Movable type)
ORG (Static type)



Enlarged view of AA cross section

⚠ Usable temperature range is for reference only.

Part Number	Usable temperature range	M
ORS	-30°C ~ 80°C	Nitrile rubber
ORP - ORG	-15°C ~ 150°C	Fluoric rubber

O-ring groove machining dimension (Reference value)					W (thickness)	do (inner diameter)		Part Number					
*d	*D	*D1		Type				No.					
3		5		5.3	1.5 ± 0.1	2.5	±0.15	ORS	3				
4		6		6.3					4				
5		7		7.3					5				
6		8		8.3					6				
7		9		9.3					7				
8		10		10.3					8				
9		11		11.3					9				
10		12		12.3					10				
12		14		14.3					12				
14		16		16.3					14				
15		17		17.3					15				
16		18		18.3					16				
18		20		20.3					18				
20		22		22.3					20				
22	0 -0.05	24	+0.05 0	24.3					2.0 ± 0.1	21.5	±0.25	ORS	22
24		27		27.5						23.5			24
25		28		28.5						24.5			25
26		29		29.5						25.5			26
28		31		31.5	27.5	28							
30		33		33.5	29.5	30							
32		35		35.5	31.5	32							
34		37		37.5	33.5	34							
35		38		38.5	34.5	35							
36		39		39.5	35.5	36							
38		41		41.5	37.5	38							
39		42		42.5	38.5	39							
40		43		43.5	39.5	40							
42		45		45.5	41.5	42							
44		47		47.5	43.5	44							
46		49		49.5	45.5	46							
48		51		51	47.5	48							

O-ring groove machining dimension (Reference value)				W (thickness)	do (inner diameter)		O - Rings JIS No.	Part Number	
*d	*D, D1 (Common)							Type	No.
3	0 -0.05	6	+0.05 0	1.9 ± 0.07	±0.24	P 3	ORP (Movable type)	3	
4		7				P 4		4	
5		8				P 5		5	
6		9				P 6		6	
7		10				P 7		7	
8		11				P 8		8	
9		12				P 9		9	
10		13				P 10		10	
11		15				P 11		11	
12		16				P 12		12	
14	18	P 14	14						
15	0 -0.06	19	+0.06 0	2.4 ± 0.07	±0.24	P 15	ORP (Movable type)	15	
16		20				P 16		16	
18		22				P 18		18	
20		24				P 20		20	
21		25				P 21		21	
22		26				P 22		22	
24		30				P 24		24	
25		31				P 25		25	
26		32				P 26		26	
28		34				P 28		28	
30	36	P 30	30						
31	37	P 31	31						
32	38	P 32	32						
34	40	P 34	34						
35	0 -0.08	41	+0.08 0	3.5 ± 0.1	±0.3	P 35	ORP (Movable type)	35	
36		42				P 36		36	
38		44				P 38		38	
39		45				P 39		39	
40		46				P 40		40	
42		48				P 42		42	
44		50				P 44		44	
46		52				P 46		46	
48		54				P 48		48	
25		0 -0.10				30		+0.10 0	3.1 ± 0.1
30	35		G 30	30					
35	40		G 35	35					
40	45		G 40	40					
45	50		G 45	45					
50	55		G 50	50					
55	60		G 55	55					
60	65		G 60	60					
65	70		G 65	65					
70	75		G 70	70					
75	80	G 75	75						
80	85	G 80	80						
85	90	G 85	85						
90	95	G 90	90						
95	100	G 95	95						
100	105	G 100	100						
105	110	G 105	105						
110	115	G 110	110						
115	120	G 115	115						
120	125	G 120	120						

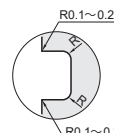
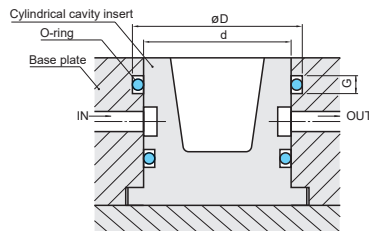
•For Cylinder Face Fixing

•For Flat Surface Fixing

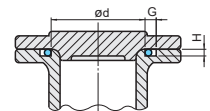


Order Example

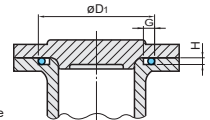
TYPE
ORG45
ORP20



Groove machining example



Against external pressure



Against internal pressure